

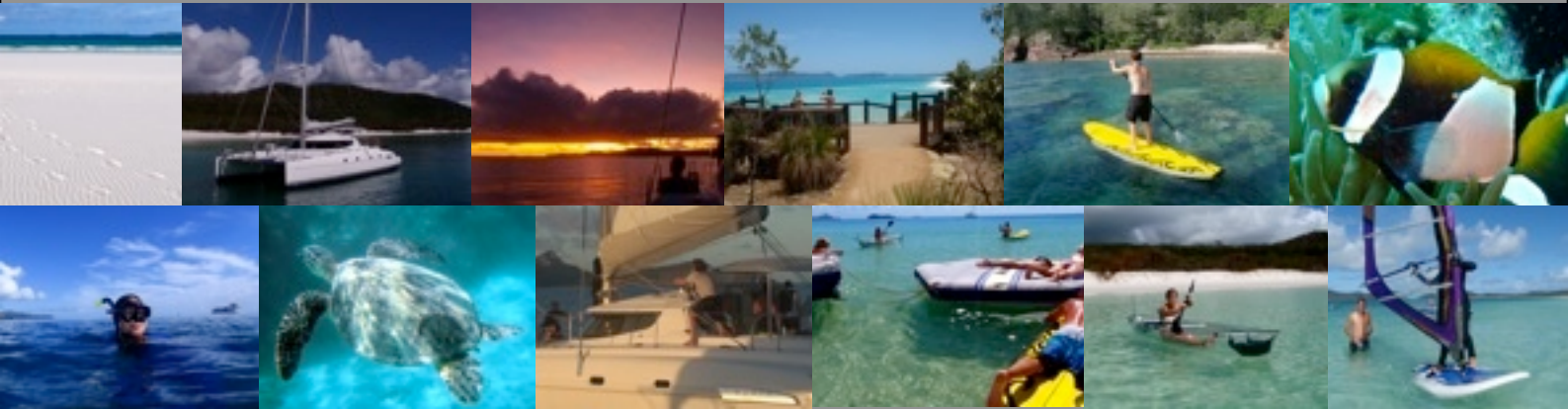
# Whitsunday sailing *ON ICE*



**Deluxe**catamaran

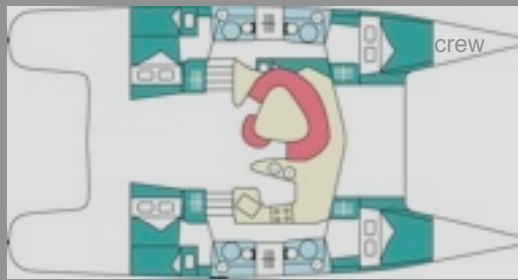


the amazing**whitsundays**



The holiday of a **lifetime**

The Whitsunday Islands - **Action packed or totally relaxed**

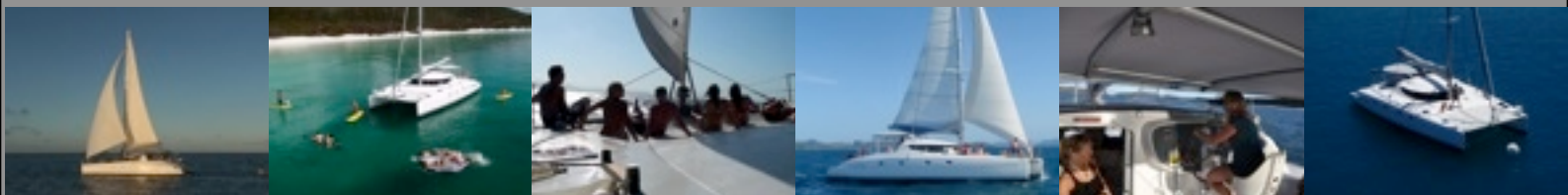


Vessel : On Ice  
 Length: 46ft  
 Make : Fountaine Pajot  
 Model: Bahia 46  
 Year. 2002  
 Mainsail: 75m2  
 Genoa: 51 m2  
 Gennaker: 110m2  
 Displacement: 9.5 t  
 Max 10 guests/2 crew

- 4 bathrooms/showers.
- Deck shower.
- Genset
- Air-con in cabins
- Water: 800l + 150l/ph Water Maker.
- 6 speaker stereo system w/mp3
- HD sony video camera with waterproof housing.
- underwater lighting system
- Ray marine instruments
- Dinghy: 3.8 m R.I.B. with 30hp outboard.



On Ice is a 14.2m deluxe catamaran. Bred from a racing heritage she was designed by sailors for sailors. Her huge foredeck is perfect for relaxing while the yacht is under sail. The aft deck is protected from the weather so guests can escape the elements without having to move indoors. The saloon features large panoramic windows allowing you to enjoy the views while feasting on the fabulous creations served up from galley. For easy access to the water, each hull has wide steps leading right down to the ocean



# THE COOLEST WATER SPORTS -ALL ON BOARD



## Underwater Scooter

Who hasn't watched one of the 007 films, where the legendary special agent zooms about with his Underwater Scooter and thought "I could do that"? Well, now is your chance. Use it to explore the fantastic whitsunday reefs or to keep up with your new best friend. Your mission: Finding Nemo!

It also great for powering the Aquaglider around. Water sports was never easier.



## Stand Up Paddling - SUP

Stand Up Paddling is a great new board sport that allows a greater view of the natural environment. Glide along Whitehaven Beach on our latest padded boards as you look out for rays, fish and sea turtles. The flat water SUP is ideal for inexperienced boarders, within 5 minutes you are off and going.

Stand Up Paddling is the coolest new water sport, enjoyed by celebrities such as Pierce Brosnan, Matthew McConaughey and Cameron Diaz.



## Transparent Sea Kayak

This completely transparent kayak doubles as a window to the underwater world below. Guests may embark on a leisurely paddle - either alone or in a pair. On a calm night the truly adventurous attach our powerful lights to see coral reef life like no one else before. The world's largest snorkel mask.



## Windsurfing

Sailing in its purest form. Windsurfing connects your hands directly to the wind and your feet directly to the water. This is the most exciting way of sailing. We carry an array of sailboarding equipment. If you're up for it, ask the crew to have a go.



## Aquaglider "Lanai"

The 'lanai' is a new concept in aquatic enjoyment. It is a large multi purpose inflatable that can be paddled, drifting or powered by our underwater scooter. Slide on for a bit of sun baking and enjoy a drink, or let our crew take you on a guided snorkel tour where we point out marine life. A great way to do something without doing anything.

Water sports equipment:

2x sea doo - sea scooters.

1x Aquaglide floating lounge

1 x clear blue hawaii -see thru kayak.

3x Naish mana stand up paddle boards,

3x Starboard Start Sailboards/ standup paddle boards.

1 x starboard Go sailboard

2x beginner sailboard rigs

2 x intermediate/advanced sailboard rigs.

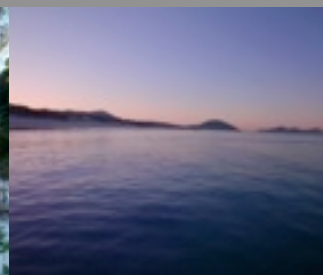
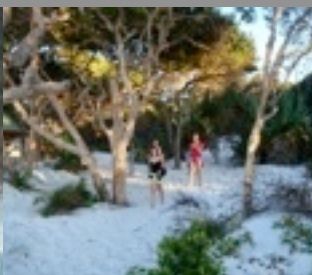
12 x silicone Mask & snorkels



## THE AMAZING WHITSUNDAYS

The Whitsunday Islands are comprised of 22 of the most pristine and beautiful islands in the world. They are part of the 74 islands of the Cumberland group. Within the Whitsunday group lies Whitehaven beach and Hill inlet lookout. The Whitsundays also boast many amazing snorkelling locations and protected anchorages. It is as if the area has been specially created for a sailing holiday.

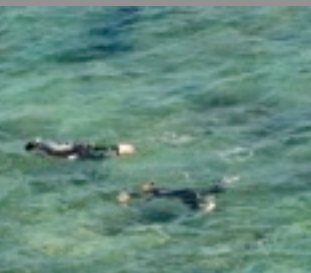
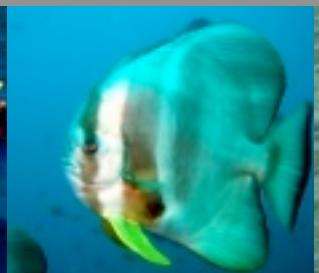
They are famous for their endless landscape photo opportunities. Let the scenery pass by as the boat sails along. Take in the blue green water and lush green islands, covered in bush and pine. Feel the force of the wind as you pull the ropes. Watch out for marine life jumping out of the water. Enjoy the serenity of the stars at night.



## THE UNDERWATER WORLD

The Whitsunday islands are located in the centre of the great barrier reef marine park. Within the marine park there are two basic types of reef: Fringing reef and platform reef. The outer barrier reef is mostly made up of platform reef. Within the protection of the outer reef lie the Whitsunday islands.

Amongst the Whitsunday Islands we have many sheltered bays containing fringing reef which boast beautiful coral gardens and teeming fish and marine life. The advantage of fringing coral reef for snorkelling is that they are protected by islands, meaning the snorkelling is always in calm water. The colourful corals and most abundant marine life are close to the surface, so all one needs to do is put on a mask and snorkel to be amazed by the underwater world. Scuba diving is available by request



# YOUR OPTIONS

## 2 NIGHTS OVER 3 DAYS

**Departs: Saturday, Monday or Thursday. 4 pm**

**Returns: Monday, Wednesday or Saturday 2pm**

Take a fast boat, experienced crew, motivated guests and you have the recipe for experiencing more of the whitsundays than some sailors will in a week. The Highlights of a typical 2 night tour will incorporate snorkelling at two of the whitsundays best coral reefs, a visit to the spectacular Hill Inlet lookout and Betty's beach, a paddle board tour taking you the length of whitehaven beach and an introduction to windsurfing.

## 3 DAY 3 NIGHT

**Departs: Monday or Wednesday 4pm**

**Returns: Thursday or Saturday 2pm**

## 5 NIGHTS OVER 6 DAYS

**Departs Saturday or Tuesday. 4 pm**

Longer charters allow more options and give guests the opportunity to enjoy a sleep in or a long lunch. In addition to plenty of sailing snorkelling and beaching, guests could consider a stopover at an island resort, scuba diving or a hike to one of the peaks of the whitsunday islands. Action packed or totally relaxed the choice is yours.

## 7 NIGHTS OVER 8 DAYS

**Departs Saturday or Tuesday. 4 pm**



## WHO SHOULD SAIL WITH US ?

**FAMILIES**-On Ice can accommodate 2-3 families in comfort. Children of all ages are catered for, however we recommend a minimum age of 5. Parents will be responsible for children's movements around the vessel, although your crew is always on hand to help with entertainment. You could enjoy some sunset drinks while we take the children snorkelling or simply enjoy a week without shopping or washing up. Sailing with us can be a surprisingly economical family vacation.

**GROUPS OF FRIENDS/SPORTS CLUBS**- What better way to catch up with old mates or finish the sporting season than a week of sailing in the whitsundays on a deluxe catamaran. The crew are happy to organize the tour according to the desires of the charterers. If the numbers build above 10 we can enlist our second vessel Iceberg.

## DIVERS, KITE SURFERS, WINDSURFERS, SUPERS.

Imagine setting off from the world famous whitehaven beach for a 35km downwind run through the famous whitsunday islands. At the end your deluxe catamaran awaits with chilled beers and the bbq already firing. We have racking to accommodate at least 10 boards, plenty of space for all your gear and a RIB with 30hp outboard for rescues. Specialised dive charters are also available with a dive master/instructor added to the crew list as required.

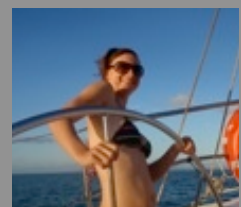
## YOUR CREW

Luke's first sailing championship was won at age 9 on a single handed dinghy. During his teens he spent every spare minute training in the olympic Laser class dinghy. Luke has competed in over 1200 races and has 14,000 ocean sailing miles under his belt. He owns On Ice and has 8 years experience sailing the whitsunday islands, he holds a Master class V qualification.



Isabelle met Luke whilst sailing the whitsundays in early 2006. She fell in love with Luke and tropical lifestyle.

Isabelle has an intimate knowledge of the underwater world of the whitsundays and is a regular competitor in local sailing events. The native german is now an Australian Resident and holds a Coxswains qualification



CONTACT YOUR TRAVEL AGENT FOR PRICING AND AVAILABILITY